

# Early childhood care for greater well-being

CAF provides financing and technical assistance so that thousands of children in Latin America and the Caribbean can **have an adequate physical, cognitive, and socioemotional development** for a fulfilling life.



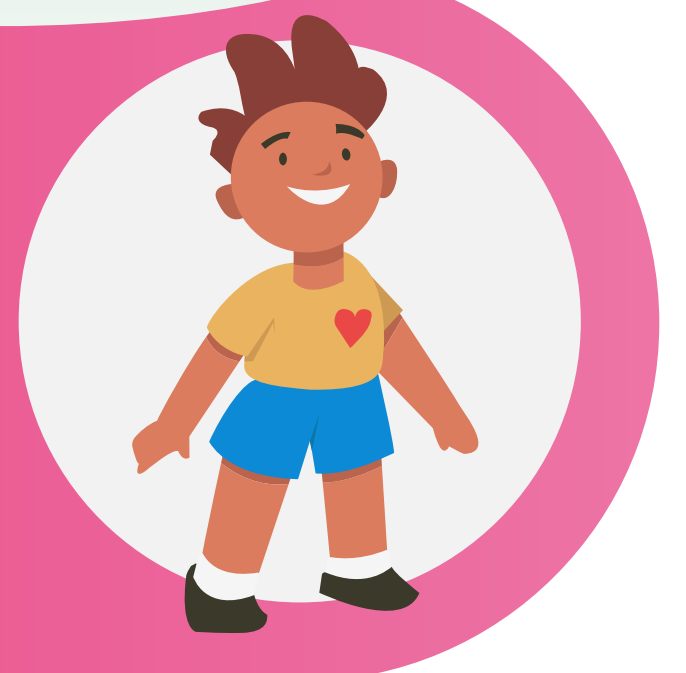
IN THE PAST 5 YEARS...

**\$1.17 billion** dollars to address early childhood development

**7 countries supported**

Argentina, Bolivia, Ecuador, Panama, Peru, Uruguay, and Venezuela

**3.8 million beneficiary children**



Stimulation, nutrition, and care as the foundation of child development

- development of **language, behavior and cognitive and psychomotor** functions.
- healthy development of physiological, metabolic, endocrine, and immune systems
- ↑ child's **learning capacity and school performance**
- ↑ **up to 8%** in lifetime labor income
- ↓ **public health and education** costs

CAF's focus for early childhood

CAF's action is based on the WHO's **Nurturing Care for Child Development approach**, which emphasizes that proper child development depends on establishing strong foundations in health, nutrition, safety, early learning, and responsive childcare.

Given the multidimensionality of child development, **policy coordination at the intersectoral level** is required.



Expected impacts (based on evidence)

Interventions



**Strengthening of maternal-child care**

- ↑ 100% of the fraction of children who are **exclusively breastfed**
- ↓ 12% lower probability of introducing complementary feeding **before six months**
- ↑ prevention of **gastrointestinal and respiratory infections**
- ↑ height-for-age scores at 12 months
- ↑ weight-for-age scores



**Cash transfers for food purchases**

- ↑ 25% probability that the household has **food security**
- ↑ 11% probability of receiving **medical check-ups**
- ↑ 28% probability of receiving **treatment for parasites**
- ↓ 30% **incidence of diseases**



**Access to safe water and WASH practices**

- ↓ 50% in the **incidence of diarrhea** in children under five
- ↓ of the **prevalence of CCM** in children under two years of age
- ↑ effectiveness of investments to **improve the nutritional status**

**Comprehensive early childhood care package**



Prenatal check-ups and follow-ups until the age of two



Access to safe water



Exclusive breastfeeding counseling



Counseling on handwashing, complementary feeding, and food preparation



Vaccination schedule support



Strengthening of information systems and institutional capacities

**↓ 3-8%**

average annual rate of **Chronic Child Malnutrition (CCM)**

CAF's support of the Results-Based Budgeting (RBB) as a management tool

CAF is supporting several countries in LAC in adopting the Results-Based Budgeting (RBB) tool for managing early childhood support programs.

RBB focuses on achieving concrete results and monitoring activities required to achieve those results. This creates incentives for better coordination among the various actors involved in providing services and leads to greater efficiency in resource allocation.

**PANAMA**

**\$110 thousand dollars**

1 project:  
› **Improvement of the quality of early childhood care services**

**6 thousand** children benefited



**ECUADOR**

**\$467 million dollars**

3 projects:  
› **Results-based budgeting to strengthen the fight against childhood chronic malnutrition**  
› **Sectoral Support Loans to reduce chronic malnutrition under a Results-Based Budgeting approach. Phases I and II**  
› **Annual Public Health Investment Plan 2023-2025**

**2 million** children benefited



**PERU**

**\$151 thousand dollars**

2 projects:  
› **Nutri Contugas**  
› **Territorial Management of the Results-Based Budgeting Program for Early Childhood Development**

**6.8 thousand** children benefited



**References**

**Types of Interventions**



Cash transfers for food purchases



Strengthening information systems



Strengthening maternal and child care



Prenatal check-ups and follow-ups until the age of two



Vaccination



Improvement in water, sanitation, and hygiene (WASH) practices



Promotion of exclusive breastfeeding



Provision of food (schools and communities)



Prevention and treatment of chronic child malnutrition (CCM)



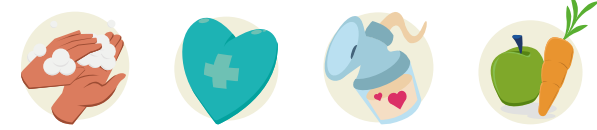
Results-based budgeting (RBB)

**VENEZUELA**

**\$584 thousand dollars**

3 projects:  
› **WASH and Nutrition in Prioritized Child Centers and Educational Units**  
› **Improving access to malnutrition care programs and WASH practices in vulnerable communities in the Capital District**  
› **Multisectoral Project with a sustainable approach and cultural relevance in the Los Pijiguaos parish, Cedeño Municipality, Bolívar State**

**19 thousand** children benefited



**BOLIVIA**

**\$226 thousand dollars**

2 projects:  
› **Creciendo con Agua Segura (Growing with Safe Water)**  
› **Development and financing of the intersectoral strategy for early childhood care**

**2.3 thousand** children benefited



**URUGUAY**

**\$156 thousand dollars**

2 projects:  
› **Strengthening comprehensive early childhood care based on a results-based management model**  
› **Improving the prioritization of the vulnerable population at the national level and the results-oriented approach of the Centers for Childhood and Family Care (CAIF, Spanish acronym) Plan**

**59.6 thousand** children benefited



**ARGENTINA**

**\$700 million dollars**

3 projects:  
› **Support Program for Argentina's National Plan Against Hunger during the COVID-19 socio-sanitary emergency. Phases I, II, and III**

**1.7 million** children benefited

